

CORRECTION

Open Access



Correction: Molar-root incisor malformation — a systematic review of case reports and case series

Emilija D. Jensen^{1,2*}, Gabrielle Smart¹, Brianna F. Poirier² and Sneha Sethi²

Correction: *BMC Oral Health* (2023) 23:576
<https://doi.org/10.1186/s12903-023-03275-6>

In the original publication of the article [1], the author has noticed the below two errors after publication.

- The figure legends for Figs. 1 and 2 are the wrong way round.
- The ‘number of cases’ in Fig. 2 in the published manuscript is incorrect ($n = 121$), whereas the newer version is correct and corresponds with the content of the article ($n = 130$).

The corrected Figs. 1 and 2 are given below.

The original article has been corrected.

The original article can be found online at <https://doi.org/10.1186/s12903-023-03275-6>.

*Correspondence:

Emilija D. Jensen
emilija.jensen@adelaide.edu.au

¹ Department of Paediatric Dentistry, Women’s and Children’s Hospital, North Adelaide, South Australia, Australia

² Adelaide Dental School, The University of Adelaide, Adelaide, South Australia, Australia



© The Author(s) 2023. **Open Access** This article is licensed under a Creative Commons Attribution 4.0 International License, which permits use, sharing, adaptation, distribution and reproduction in any medium or format, as long as you give appropriate credit to the original author(s) and the source, provide a link to the Creative Commons licence, and indicate if changes were made. The images or other third party material in this article are included in the article’s Creative Commons licence, unless indicated otherwise in a credit line to the material. If material is not included in the article’s Creative Commons licence and your intended use is not permitted by statutory regulation or exceeds the permitted use, you will need to obtain permission directly from the copyright holder. To view a copy of this licence, visit <http://creativecommons.org/licenses/by/4.0/>. The Creative Commons Public Domain Dedication waiver (<http://creativecommons.org/publicdomain/zero/1.0/>) applies to the data made available in this article, unless otherwise stated in a credit line to the data.

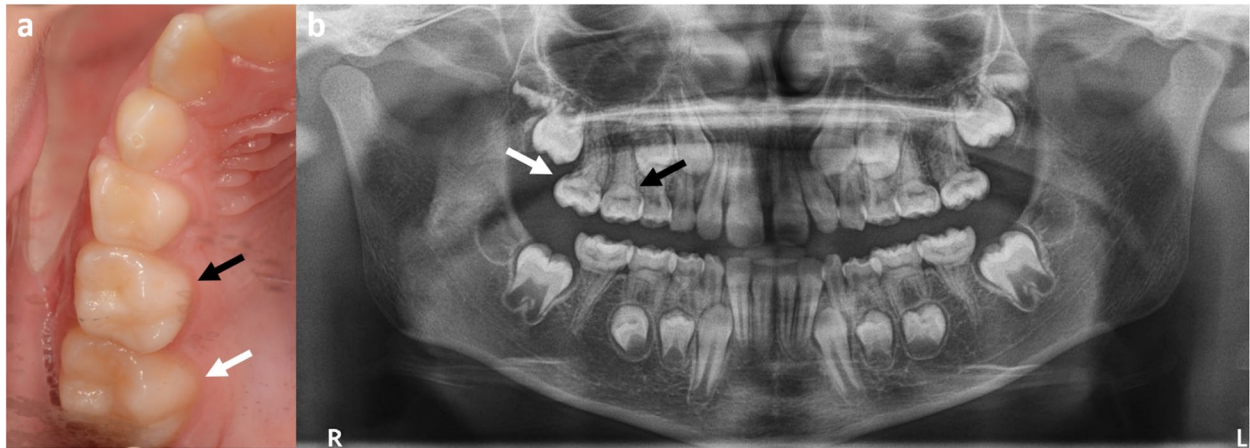


Fig. 1 An individual in the mixed dentition with primary second molars and permanent first molars affected by molar-root incisor malformation, **a** a clinical photograph of the normal clinical crowns of teeth 55 (black arrow) and 16 (white arrow) and **b** a panoramic radiograph of the same individual with affected teeth 55 (black arrow) and 16 (white arrow) highlighting the tapered, thin roots with a constricted cemento-enamel junction consistent with molar-root incisor malformation

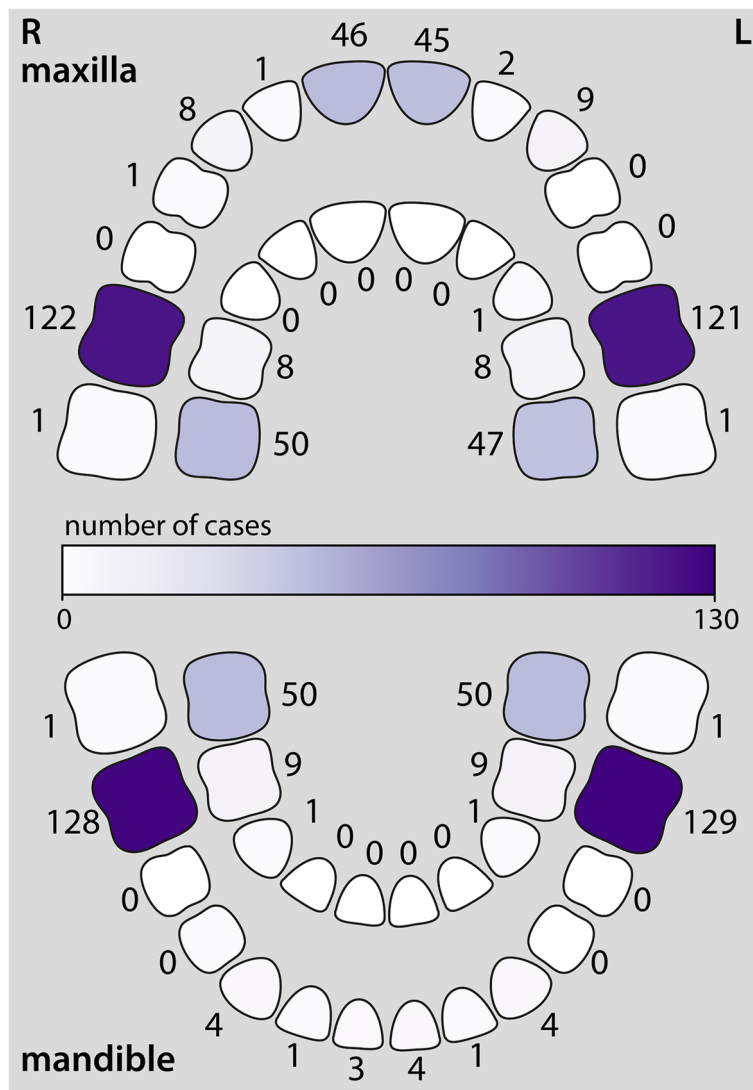


Fig. 2 Pictorial representation of permanent (outer arch) and primary (inner arch) teeth affected by molar-root incisor malformation. The number of reported cases (out of a total of 130 cases) is noted and shaded as a gradient corresponding to the scale in the centre of the diagram

Accepted: 28 October 2023
 Published online: 24 November 2023

Reference

1. Jensen ED, et al. Molar-root incisor malformation — a systematic review of case reports and case series. BMC Oral Health. 2023;23:576. <https://doi.org/10.1186/s12903-023-03275-6>.