

RESEARCH ARTICLE

Open Access

# Efficacy of four different irrigation techniques combined with 60°C 3% sodium hypochlorite and 17% EDTA in smear layer removal

Xiangjun Guo<sup>1†</sup>, Hui Miao<sup>1†</sup>, Lei Li<sup>1</sup>, Shasha Zhang<sup>2</sup>, Dongyan Zhou<sup>3</sup>, Yan Lu<sup>1</sup> and Ligeng Wu<sup>1\*</sup>

## Abstract

**Background:** Efforts to improve the efficacy of smear layer removal by applying irrigant activation at the final irrigation or by elevating the temperature of the irrigant have been reported. However, the combination of such activation protocols with 60°C 3% sodium hypochlorite (NaOCl) has seldom been mentioned. The aim of this study was to compare the efficacy in smear layer removal of four different irrigation techniques combined with 60°C 3% NaOCl and 17% EDTA.

**Methods:** Fifty single-rooted teeth were randomly divided into five groups ( $n = 10$ ) according to the irrigant agitation protocols used during chemomechanical preparation (Dentsply Maillefer, Ballaigues, Switzerland): a side-vented needle group, a ultrasonic irrigation (UI) group, a NaviTip FX group, an EndoActivator group, and a control group (no agitation). After each instrumentation, the root canals were irrigated with 1 mL of 3% NaOCl at 60°C for 1 minute, and after the whole instrumentation, the root canals were rinsed with 1 mL of 17% EDTA for 1 minute. Both NaOCl and EDTA were activated with one of the five irrigation protocols. The efficacy of smear layer removal was scored at the apical, middle and coronal thirds. The Data were statistically analyzed using SAS version 9.2 for Windows (rank sum test for a randomised block design and ANOVA).

**Results:** No significant differences among the NaviTip FX group, EndoActivator group and control groups, and each of these groups showed a lower score than that of UI group ( $P < 0.05$ ). Within each group, all three thirds were ranked in the following order: coronal > middle > apical ( $P < 0.05$ ). In the coronal third, the NaviTip FX group was better than UI group. In the middle and apical third, the differences were not significant among any of the groups.

**Conclusions:** Even without any activation, the combination of 60°C 3% NaOCl and 17% EDTA could remove the smear layer effectively, similar to NaviTip FX or EndoActivator, and these three protocols were more effective than UI. However, regardless of different types of irrigation technique applied, complete removal of the smear layer was not achieved, particularly in the apical third.

**Keywords:** EDTA, EndoActivator, Irrigant activation, Ultrasonic irrigation, Smear layer, Sodium hypochlorite

## Background

Root canal therapy cleans the root canal system through mechanical instrumentation and root canal irrigation [1]. However, during the process of instrumentation, large amount of dentin debris mix with vital and necrotic remnants of pulp tissue, in combination with microorganisms

and microbial toxins adhered to the root canal wall, form a smear layer [2]. This smear layer prevents medicaments from penetrating into the dentinal tubules and killing the bacteria within. In addition, the smear layer also decreases the adaptability of filling materials and their penetration into the canal walls, thus reducing their sealing ability [2,3].

The combined application of sodium hypochlorite (NaOCl) and ethylenediaminetetraacetic acid (EDTA) has been recommended to remove both the organic and inorganic components of the smear layer effectively [2,4-6].

\* Correspondence: wu\_ligeng@yahoo.com

†Equal contributors

<sup>1</sup>From the Department of Endodontics, School of Stomatology, Tianjin Medical University, #12 Qi Xiang Tai Road, He Ping District, Tianjin 300070, PR China

Full list of author information is available at the end of the article

NaOCl is widely used in endodontic irrigation because of its antimicrobial activity and tissue-dissolving capability [7-9], which removes the organic component of the smear layer. In addition, EDTA, a decalcifying agent, removes the inorganic component of the smear layer [4,10-12]. Most studies have demonstrated effective but incomplete, smear layer removal with these agents, especially in the apical third of the root canal [13-16]. Higher temperature has also shown to enhance the efficacy of sodium hypochlorite [8,17-19]. However, even the combination of 60°C 3% NaOCl and 17% EDTA was shown to be inadequate for complete clearance of the smear layer in one study [5].

Various activation techniques such as ultrasonic and sonic systems have thus been introduced in an attempt to enhance the effectiveness of irrigants on smear layer removal. However, it is not clear whether these are effective as inconsistent to previous findings.

The use of Ultrasonic irrigation (UI) contributes to the removal of smear layer [20]. Guerisoli et al. [21] reported the effective removal of smear layers throughout the canal under ultrasonic agitation using NaOCl combined with EDTA plus Cetavlon. However, a conflicting study reported that ultrasonic-activated 5.25% NaOCl and 17% EDTA did not decrease smear layer scores [22].

The NaviTip FX is a brush-covered irrigation needle. A previous report indicated that the efficacy of the NaviTip FX in removing the smear layer in curved root canals, and reported that the use of NaviTip FX with 5.25% NaOCl and 17% EDTA augmented by FileEze (a 19% water-soluble viscous EDTA solution) was the most effective cleaning protocol [23].

EndoActivator is a sonically driven canal irrigation system in which flexible polymer tips do not incise the canal wall [24]. Agitation of the irrigants repeatedly results in significantly more smear layer removal than no agitation (NaviTip), and EndoActivator was found to be significantly more effective than ultrasonic agitation or the CanalBrush in the coronal region of curved root canals [25]. However, EndoActivator was also found not to enhance the removal of the smear layer when compared with Max-i-Probe irrigation with 2.5% NaOCl and 17% EDTA [24].

In an attempt to obtain some clarity and verify or disprove the findings from the studies mentioned above, we applied a higher temperature irrigant and activated it throughout the root canal preparation. The purpose and intent of this study was to compare the efficacy of four different techniques for smear layer removal, including the side-vented needle, UI, NaviTip FX, and EndoActivator protocols, combined with 60°C 3% NaOCl and 17% EDTA.

## Methods

### Specimen preparation

The study was approved by the institutional ethics committee of Tianjin Medical University. Fifty freshly extracted,

single-rooted, non-carious maxillary anterior teeth with the patients' consents were collected and stored in 0.1% thymol solution after the removal of the calculus and periodontal ligaments. The teeth were decoronated to standardize the root length at 15 mm. ISO #10 K-files (Dentsply Tulsa, Tulsa, OK, USA) were inserted into the root canal until they were just visible at the apical foramina at 4× magnification under a surgical microscope (Möller-Wedel International, Wedel, Germany). The working length (WL) was established by deducting 1 mm from this point.

The teeth were randomly divided into four experimental groups and one control group ( $n = 10$ ). The root canals were prepared with the crown-down technique using ProTaper nickel-titanium rotary instrument (Dentsply Maillefer, Ballaigues, Switzerland) up to size F3.

### Irrigation protocols

#### *Side-vented needle group ( $n = 10$ )*

During the root canal preparation, the root canals were initially irrigated with 1 mL 60°C 3% NaOCl (Septodont, Saint-Maur, France) for 1 min after each instrumentation, and then with 5 mL sterile distilled water followed by 1 mL 17% EDTA (META, Chungbuk, ROK) as the final rinse after the whole instrumentation process. The solutions were delivered by a side-vented needle (24/0.4) (SuYun, Jiangsu, China) placed as deep in the root canal as possible without encountering resistance but not deeper than the predetermined WL minus 1 mm. Finally, the canals were flushed with 5 mL sterile distilled water and dried with sterile paper points.

#### *UI group ( $n = 10$ )*

During the root canal preparation, the root canals were initially irrigated with 1 mL 60°C 3% NaOCl for 1 min after each instrumentation, and then with 5 mL sterile distilled water followed by 1 mL 17% EDTA as the final rinse after the whole instrumentation process. These solutions were delivered by a side-vented needle (24/0.4) and were activated simultaneously with a #15 file (Satelec, Acteon, France) driven by an ultrasonic device (MTS piezo electric unit; Multi Task Cart, Obtura Spartan, USA) at 4/10-scale power in accordance with the manufacturer's instructions. The working tips used for UI were placed as deep in the root canals as possible without encountering resistance, but not deeper than the predetermined WL minus 1 mm. They were then moved up and down smoothly to facilitate unobstructed backflow of the irrigation solution. Finally, the canals were flushed with 5 mL sterile distilled water and dried with sterile paper points.

#### *NaviTip FX group ( $n = 10$ )*

The procedures in this group were the same as those for the side-vented needle group, but the side-vented needle

was replaced with a 30-gauge NaviTip FX (Ultradent Products Inc., South Jordan, UT), which was moved up and down smoothly to facilitate unobstructed backflow of the irrigation solution.

#### **EndoActivator group ( $n = 10$ )**

The procedures in this group were the same as those for the UI group, but UI was replaced with the EndoActivator system (Dentsply Tulsa Dental Specialties). A yellow tip (15/02) was used initially, but was replaced with a red tip (25/04) when a ProTaper F1 instrument was used both vibrated at a frequency of 10,000 cycles per minute (cpm).

#### **Control group (no agitation, $n = 10$ )**

Using a side-vented needle placed just at the orifice of the root canal, the irrigants (NaOCl and EDTA) were flushed into each canal and left in place for 1 min per canal.

#### **Scanning electron microscopy**

Sterilized cotton pellets were placed in the root canal orifices, and longitudinal grooves parallel to the buccolingual direction were prepared in each specimen using a silicon carbide disk at low speed without penetrating the canal. The teeth were split into two halves along the grooves using an osteotome, fixed in 2.5% glutaraldehyde for 24 h, and then dehydrated in an ascending ethanol series (70%, 80%, and 90%, 15 min per step) before being sputter-coated with gold. The samples were then examined under a thermal field emission scanning electron microscope at the apical third (3 mm from the apex), middle third (7 mm from the apex), and coronal third (11 mm from the apex) in a double-blind test. Photographs were obtained from three randomly selected locations at each site at a magnification of 1000 $\times$ . Eighteen photographs were obtained from each specimen, giving a total of 900.

Smear layer removal was scored according to the following criteria: (1) the smear layer was completely absent; most of the tubules were patent and debris-free (coronal and middle thirds) or were occluded with sclerotic casts (apical third); (2) the smear layer covered <25% of the canal wall and dentinal tubules; (3) the smear layer was evident in 25%–50% of the canal surface and tubules; (4) the smear layer was evident in 50%–75% of the canal surface and tubules; and (5) the smear layer covered 75%–100% of the canal surface and tubules [26].

Four examiners blinded to the group assignment scored the smear layer removal using the 900 pictures. To eliminate bias, the first 100 pictures were scored more times to ensure intraexaminer consistency and the kappa test results showed good interexaminer agreement, with values > 0.6 for the various categories. Statistical analyses were performed using the rank sum test for a randomised block

design and, after rank transformation, ANOVA for a randomised block design. All were performed using SAS version 9.2 for Windows.

## **Results**

Findings from the comparison of the efficacy of the five different irrigation protocols for smear layer removal are summarized in Figure 1 and Table 1. Statistically significant differences were observed among the five groups ( $P < 0.05$ ). The NaviTip FX, EndoActivator, and control techniques were found to have similar efficacy, and all had lower scores than UI ( $P < 0.05$ ). The UI and side-needle techniques also had similar efficacy since no statistically significant differences were observed.

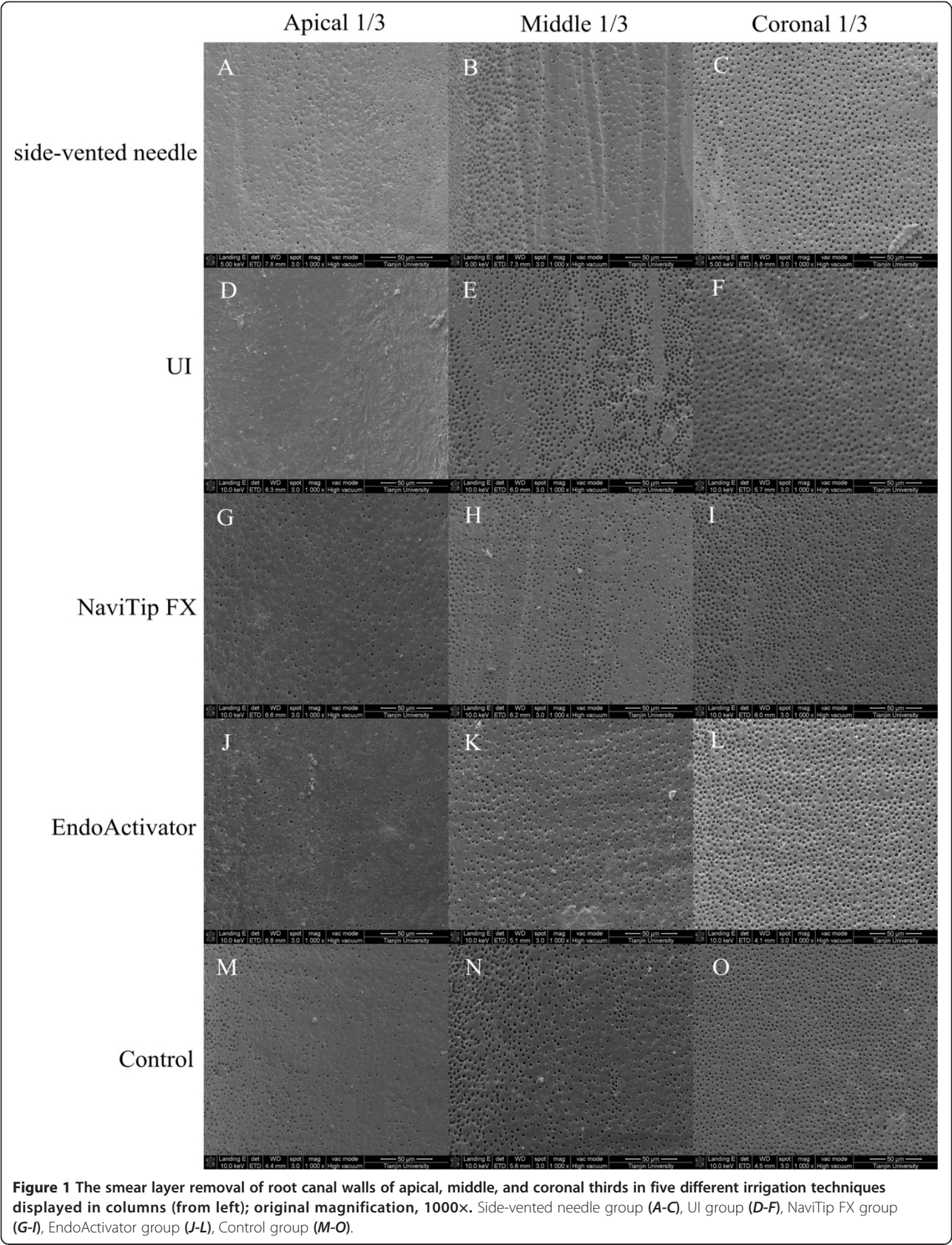
Regarding comparisons of the canal thirds (Figure 1), statistically significant differences were observed among the coronal, middle, and apical thirds ( $P < 0.05$ ). Efficacy was greatest in the coronal third followed by the middle third and then the apical third in all groups.

Statistical analysis of the efficacy of the different irrigant agitation protocols in each canal third (Figure 1, Table 1) revealed that the EndoActivator technique was more effective than UI in the coronal third ( $P < 0.05$ ), but no other statistically significant differences were observed. All of the techniques appeared to have similar efficacy in the middle and apical thirds ( $P > 0.05$ ).

## **Discussion**

According to the literature, irrigant activation protocols that are only applied at the final irrigation can improve the efficacy of smear layer removal [27,28]. However, there are few data available regarding the application of agitation protocols throughout the preparation. Further, the combination of such protocols with an initial rinse with 60°C 3% NaOCl has seldom been mentioned. In our study, the smear layer was removed using 60°C 3% NaOCl and 17% EDTA in combination with five different protocols including the side-vented needle, UI, NaviTip FX, and EndoActivator techniques, as well as no agitation throughout the preparation.

We found that even without any agitation, the combination of 60°C 3% NaOCl and 17% EDTA was effective at removing the smear layer, and had a similar efficacy to that of the NaviTip FX and EndoActivator techniques. Thus, the non-activated and activated irrigation techniques had similar efficacy, which contradicts the conclusions of Caron et al. [27]. The difference might be due to the efficacy of NaOCl in the removal of the organic component. This is primarily dependent on the activated chlorine concentration, which is increased to 6%–9% when 5% NaOCl is heated to 60–85°C for 4 h [29]. All of the NaOCl used in this study was heated to 60°C, which ensured an adequate activated chlorine concentration for removing the smear layer. In addition, the



**Table 1 Means and SD values and results of comparison between smear layer scores for different irrigation techniques**

Segment	Side-vented needle		UI		NaviTip FX		Endo- Activator		Control		P value
	Mean	SD	Mean	SD	Mean	SD	Mean	SD	Mean	SD	
Apical	4.66 <sup>a,b</sup>	0.60	4.33 <sup>a,b</sup>	0.47	4.66 <sup>a,b</sup>	1.02	4.42 <sup>a,b</sup>	0.78	4.34 <sup>a,b</sup>	0.94	> 0.05
Middle	2.83 <sup>a,b</sup>	0.71	2.67 <sup>a,b</sup>	0.86	2.66 <sup>a,b</sup>	0.99	2.00 <sup>a,b</sup>	1.30	2.34 <sup>a,b</sup>	0.56	> 0.05
Coronal	1.48 <sup>a,b</sup>	0.35	2.00 <sup>b</sup>	0.53	1.58 <sup>a,b</sup>	0.79	1.67 <sup>a</sup>	1.03	1.58 <sup>a,b</sup>	0.61	< 0.05
Total	2.83 <sup>a,b</sup>	1.30	3.08 <sup>a</sup>	0.29	2.58 <sup>b</sup>	0.98	2.16 <sup>b</sup>	1.38	2.42 <sup>b</sup>	1.24	< 0.05

Means with the same superscripts are not statistically significant ( $P > 0.05$ ).

volume of the irrigant might have influenced smear layer removal as with no agitation, merely leaving the irrigant within the root canal for 1 min allowed for a greater volume of irrigant inside. At the same time, the space taken up by the activation appliance (NaviTip FX or EndoActivator) could have made a difference since the root canal is such a tiny space; the appliance could have reduced the volume of irrigant within the root canal and thus decreased its efficacy. This discrepancy might have been compensated for by the scrubbing action and mechanical activation, which could explain the finding of similar efficacy.

Guerisoli [21] and Kuah [30] reported that ultrasonic agitation could effectively remove the smear layer. However, in the present study, the NaviTip FX, EndoActivator, and no agitation were more effective at removing the smear layer than UI. This finding is most likely to be partly associated with the fact that the NaviTip FX is an irrigation needle that is covered with bristles that enhance smear layer removal during scrubbing [31]. In addition, the EndoActivator has a polymer-based tip with a smooth surface, so it does not cut the root dentin [24]; hence, no new smear layer is formed. In addition, the diameter of the EndoActivator tips increased with successive enlargement of the root canals. Switching from yellow to red tips enabled deeper insertion and closer adaptation to the dimensions of the shaped canals. Use of the highest vibrational frequency of 10,000 cpm might also have ensured better smear layer removal. As for UI, it was required that the ultrasonic tips should not contact the root canal wall during the irrigation process. However, it was difficult to keep the tips from touching the walls of the root canal [27], which most likely resulted in incisions in the canal walls triggering the formation of a new, undesirable smear layer and decreasing the efficacy of smear layer removal. Finally, no agitation was more effective for smear layer removal than UI, which might be due to the larger volume of irrigant used and the fact that no new smear layer was formed as no canal wall incisions were made.

The efficacy of the irrigation protocols in terms of smear layer removal in the coronal, middle, and apical thirds ranged from excellent to poor, probably owing to

the following reasons: (1) As the diameter of the root canal gradually decreased from the coronal to apical third, the volume of the irrigant decreased, which decreased the liquid backflow. Thus, less irrigant was flushed into the apical third than the middle and coronal thirds; (2) fewer dentinal tubules were found in the apical third compared with the middle and coronal thirds, and the extent of mineralisation increases with age [5].

## Conclusions

Even without any activation, the combination of 60°C 3% NaOCl used as irrigant during root canal preparation and 17% EDTA as the final irrigant was effective for smear layer removal and showed similar efficacy to the NaviTip FX and EndoActivator techniques; all three were more effective than UI. However, regardless of the type of irrigation technique applied, complete removal of the smear layer was not achieved, particularly in the apical third.

## Competing interests

The authors declare that they have no competing interests.

## Authors' contributions

XJG performed the experiments and was involved in the analysis and interpretation of data, and the writing of the report and manuscript. LGW was involved in the design of the experiment and the interpretation of data and reviewed the manuscript. HM, LL, SSZ, DYZ and YL contributed to data interpretation and the preparation of the manuscript. All authors have read and approved the final version of the manuscript.

## Acknowledgements

This study was supported by grants from Tianjin Health Bureau. The authors thank Dentsply (Switzerland), Septodont (France), and META (Korea) for providing the root canal instrumentation used in this study.

## Author details

<sup>1</sup>From the Department of Endodontics, School of Stomatology, Tianjin Medical University, #12 Qi Xiang Tai Road, He Ping District, Tianjin 300070, PR China. <sup>2</sup>Stomatological Hospital of Nankai University, Stomatological Hospital of Nankai University, Tianjin, China. <sup>3</sup>The Department of Stomatology, The second Hospital of Jiaying, Zhejiang, China.

Received: 12 March 2014 Accepted: 3 September 2014

Published: 8 September 2014

## References

1. Haapasalo M, Endal U, Zandi H, Coil JM: Eradication of endodontic infection by instrumentation and irrigation solutions. *Endod Topics* 2005, 10:77–102.

2. Sen BH, Wesselink PR, Turkun M: **The smear layer: a phenomenon in root canal therapy.** *Int Endod J* 1995, **28**:141–148.
3. Torabinejad M, Handysides R, Khademi AA, Bakland LK: **Clinical implications of the smear layer in endodontics: a review.** *Oral Surg Oral Med Oral Pathol Oral Radiol Endod* 2002, **94**:658–666.
4. Carvalho AS, Camargo CH, Valera MC, Camargo SE, Mancini MN, Mancini MN: **Smear layer removal by auxiliary chemical substances in biomechanical preparation: A scanning electron microscope study.** *J Endod* 2008, **34**:1396–1400.
5. Wu L, Mu Y, Deng X, Zhang S, Zhou D: **Comparison of the effect of four decalcifying agents combined with 60°C 3% sodium hypochlorite on smear layer removal.** *J Endod* 2012, **38**:381–384.
6. Peters OA, Barbakow F: **Effect of irrigation on debris and smear layer on canal walls prepared by two rotary techniques: a scanning electron microscopic study.** *J Endod* 2000, **26**:6–10.
7. Gutarts R, Nusstein J, Reader A, Beck M: **In vivo debridement efficacy of ultrasonic irrigation following hand-rotary instrumentation in human mandibular molars.** *J Endod* 2005, **31**:166–170.
8. Sirtes G, Waltimo T, Schaetzle M, Zehnder M: **The effects of temperature on sodium hypochlorite short-term stability, pulp dissolution capacity, and antimicrobial efficacy.** *J Endod* 2005, **31**:669–671.
9. de Vasconcelos BC, Luna-Cruz SM, De-Deus G, de Moraes IG, Maniglia-Ferreira C, Gurgel-Filho ED: **Cleaning ability of chlorhexidine gel and sodium hypochlorite associated or not with EDTA as root canal irrigants: scanning electron microscopy study.** *J App Oral Sci* 2007, **15**:387–391.
10. Lui JN, Kuah HG, Chen NN: **Effect of EDTA with and without surfactants or ultrasonics on removal of smear layer.** *J Endod* 2007, **33**:472–475.
11. Chopra S, Murray PE, Namerow KN: **A scanning electron microscopic evaluation of the effectiveness of the f-file versus ultrasonic activation of a K-file to remove smear layer.** *J Endod* 2008, **34**:1243–1245.
12. Mello I, Robazza CR, Antoniazzi JH, Coil J: **Influence of different volumes of EDTA for final rinse on smear layer removal.** *Oral Surg Oral Med Oral Pathol Oral Radiol Endod* 2008, **106**:e40–e43.
13. Takeda FH, Harashima T, Kimura Y, Matsumoto K: **A comparative study of the removal of smear layer by three endodontic irrigants and two types of laser.** *Int Endod J* 1999, **32**:32–39.
14. Yamazaki AK, Moura-Netto C, Salgado RJ, Kleine BM, Prokopowitsch I: **Ex vivo analysis of root canal cleaning using Endo-PTC associated to NaOCl and different irrigant solutions.** *Braz Oral Res* 2010, **24**:15–20.
15. Khedmat S, Shokouhinejad N: **Comparison of the efficacy of three chelating agents in smear layer removal.** *J Endod* 2008, **34**:599–602.
16. Mozayeni MA, Javaheri GH, Poorroosta P, Ashari MA, Javaheri HH: **Effect of 17% EDTA and MTAD on intracanal smear layer removal: a scanning electron microscopic study.** *Aust Endod J* 2009, **35**:13–17.
17. Rossi-Fedele G, De Figueiredo JA: **Use of a bottle warmer to increase 4% sodium hypochlorite tissue dissolution ability on bovine pulp.** *Aust Endod J* 2008, **34**:39–42.
18. Abou-Rass M, Oglesby SW: **The effects of temperature, concentration, and tissue type on the solvent ability of sodium hypochlorite.** *J Endod* 1981, **7**:376–377.
19. Stojicic S, Zivkovic S, Qian W, Zhang H, Haapasalo M: **Tissue dissolution by sodium hypochlorite: effect of concentration, temperature, agitation, and surfactant.** *J Endod* 2010, **36**:1558–1562.
20. Martin H, Cunningham MJ, Morris JP, Cotton WR: **Ultrasonic versus hand filing of dentine: a quantitative study.** *Oral Surg Oral Med Oral Pathol* 1980, **49**:79–81.
21. Guerisoli DM, Marchesan MA, Walmsley AD, Lumley PJ, Pecora JD: **Evaluation of smear layer removal by EDTAC and sodium hypochlorite with ultrasonic agitation.** *Int Endod J* 2002, **35**:418–421.
22. Mayer BE, Peters OA, Barbakow F: **Effects of rotary instruments and ultrasonic irrigation on debris and smear layer scores: a scanning electron microscopic study.** *Int Endod J* 2002, **35**:582–589.
23. Zmener O, Pameijer CH, Serrano SA, Palo RM, Iglesias EF: **Efficacy of the NaviTip FX irrigation needle in removing post instrumentation canal smear layer and debris in curved root canals.** *J Endod* 2009, **35**:1270–1273.
24. Uroz-Torres D, González-Rodríguez MP, Ferrer-Luque CM: **Effectiveness of the EndoActivator system in removing the smear layer after root canal instrumentation.** *J Endod* 2010, **36**:308–311.
25. Rödig T, Döllmann S, Konietschke F, Drebenstedt S, Hülsmann M: **Effectiveness of different irrigant agitation techniques on debris and smear layer removal in curved root canals: a scanning electron microscopy study.** *J Endod* 2010, **36**:1983–1987.
26. Saber S, Hashem A: **Efficacy of different final irrigation activation techniques on smear layer removal.** *J Endod* 2011, **37**:1272–1275.
27. Caron G, Nham K, Bronnec F, Machtou P: **Effectiveness of different final irrigant activation protocols on smear layer removal in curved canals.** *J Endod* 2010, **36**:1361–1366.
28. Herrera DR, Santos ZT, Tay LY, Silva EJ, Loguercio AD, Gomes BP: **Efficacy of different final irrigant activation protocols on smear layer removal by EDTA and citric acid.** *Microsc Res Tech* 2013, **76**:364–369.
29. Fraix S, Ng YL, Gulabivala K: **Some factors affecting the concentration of available chlorine in commercial sources of sodium hypochlorite.** *Int Endod J* 2001, **34**:206–215.
30. Dadresanfar B, Khalilak Z, Delvarani A, Mehrvarzfar P, Vatanpour M, Pourasadollah M: **Effect of ultrasonication with EDTA or MTAD on smear layer, debris and erosion scores.** *J Oral Sci* 2011, **53**:31–36.
31. Al-Hadlaq SM, Al-Turaiki SA, Al-Sulami U, Saad AY: **Efficacy of a new brush-covered irrigation needle in removing root canal debris: a scanning electron microscopic study.** *J Endod* 2006, **32**:1181–1184.

doi:10.1186/1472-6831-14-114

**Cite this article as:** Guo et al.: Efficacy of four different irrigation techniques combined with 60°C 3% sodium hypochlorite and 17% EDTA in smear layer removal. *BMC Oral Health* 2014 **14**:114.

**Submit your next manuscript to BioMed Central and take full advantage of:**

- Convenient online submission
- Thorough peer review
- No space constraints or color figure charges
- Immediate publication on acceptance
- Inclusion in PubMed, CAS, Scopus and Google Scholar
- Research which is freely available for redistribution

Submit your manuscript at  
www.biomedcentral.com/submit

